

# Orbica Geospatial Platform

## 7th forum on forest & wood innovations

Swisskrono, Wittstock 22.06.2023

ORBICA



WOOD INNOVATIVE DISRUPTION IN FOREST INDUSTRIES

Leonhard Ventures



SWISS KRONO

32  
team  
members

founded  
In 2017

Berlin  
Christchurch

# GEOSPATIAL DEVELOPMENT PLATFORM

- Geospatial analysis and development
- Remote sensing
- Artificial intelligence
- Data Science
- Business intelligence
- Agile practitioners



SIEMENS

VONOVIA



thyssenkrupp

RAG

BASF

We create chemistry



# Orbica Platform

A platform purpose-built to help you leverage Geospatial



## BESPOKE TOOLS & WORKFLOWS

Create bespoke geospatial solutions for your data and business. Users can use / developers can develop



## DESIGNED FOR EVERYONE

Enable everyone in your organization to unlock the value of spatial data, without relying on the GIS team for everything



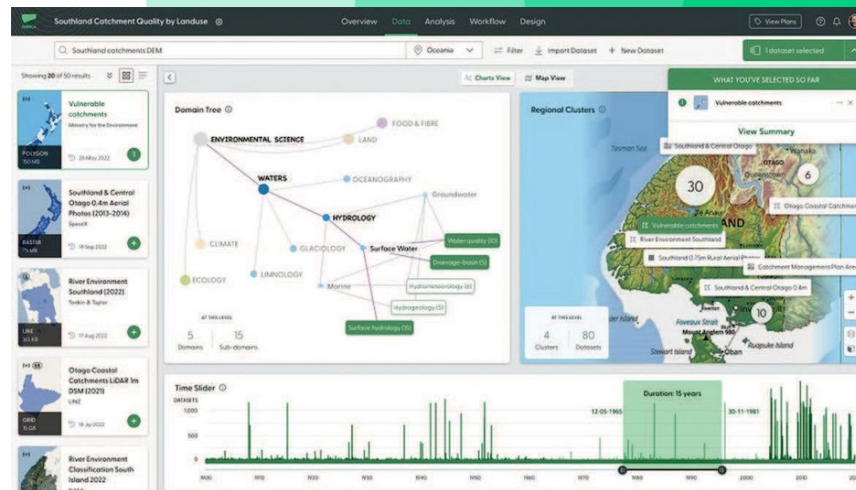
## TRANSPARENT PRICING

Only pay for what you actually need with transparent, consumption-based pricing and shared licensing



## CONTROLLED GOVERNANCE

Set organization-wide governance controls across standards, quality, security, visibility, and costs



# Forest Innovation Case Studies

ORBICA



WOOD INNOVATIVE DISRUPTION IN FOREST INDUSTRIES

Leonhard Ventures



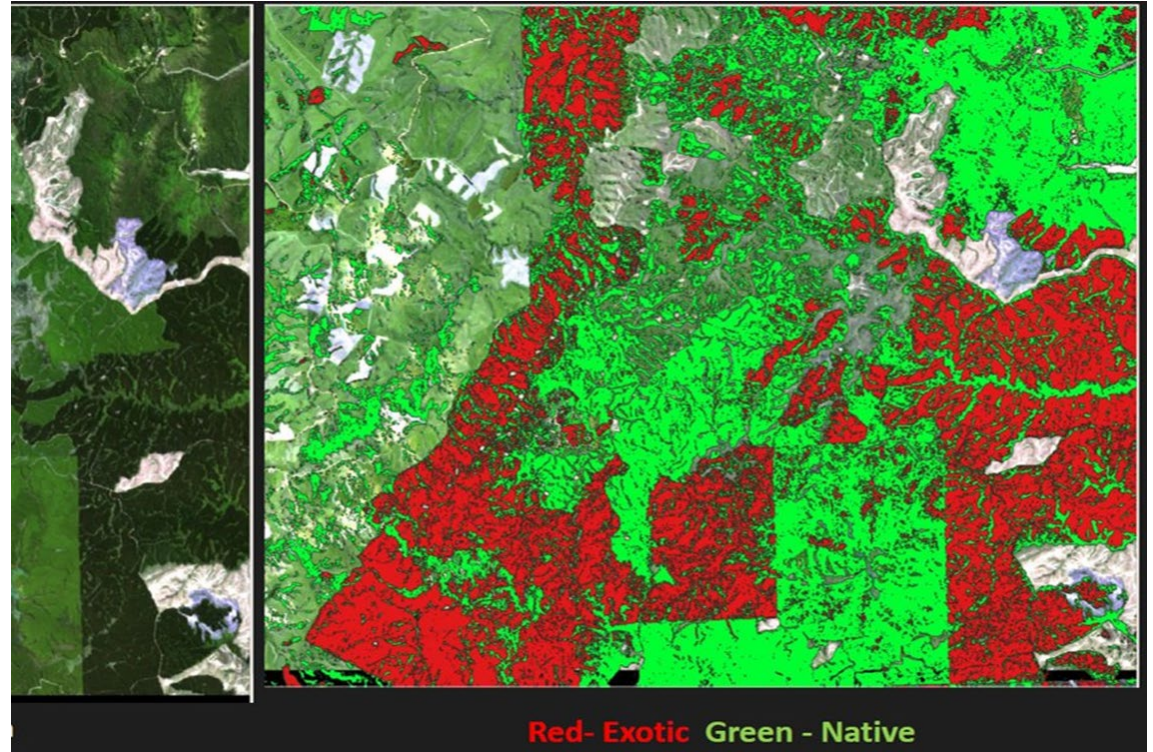
SWISS KRONO

# Biodiversity Net Gain Tool



# Forest Fire Fuel Risk Analysis

National scale  
GeoAI



# Tree Farmers Trust Forestry Planning Application

Zoom Level: 12

Enter address or search

Enter fullscreen

Map Layers

- Productivity surfaces
- Land Parcels (LINZ)
- Roads (LINZ)
- Waterways (NIWA)
- Power Lines (LINZ)
- Power Lines (OSM)
- Rock Pits (LINZ)
- Shingle Pits (LINZ)
- Quarries (LINZ)
- Slope layer
- Erosion layer
- Basemap: Aerials (LINZ)
- Basemap: Streets (OSM)

Woodlot 1

ORBICA

Inputs Estimated Costs

1. Map Search

Enter address or search

Use the map to navigate, or search for a property address.

2. Draw Woodlot Boundary

Use Area Drawing Tool

Woodlot boundary

Woodlot	Vegetation/Land cover(%)	Action
292.58ha	Pasture	
Woodlot 1	+	

Aerial imagery sourced from the LINZ Data Service, CC BY 4.0 | Map data by FGR, LINZ, NIWA | © Mapbox © OpenStreetMap. Improve this map

ORBICA



WOOD INNOVATIVE DISRUPTION IN FOREST INDUSTRIES

Leonhard Ventures



SWISS KRONO

Zoom Level: 14

**Map Layers**

- Productivity surfaces
- Wind risk
- Land Parcels (LINZ)
- Roads (LINZ)
- Waterways (NIWA)
- Power Lines (LINZ)
- Power Lines (OSM)
- Rock Pits (LINZ)
- Shingle Pits (LINZ)
- Quarries (LINZ)
- Slope layer
- Erosion layer
- Basemap: Aerials (LINZ)
- Basemap: Streets (OSM)

Map data by FGR, LINZ, NIWA | © Mapbox © OpenStreetMap Improve this map © Maxar

## TreeFarmer Application

Get started by navigating to your property by entering the address, then choose the option to examine "Planting Trees" or select "Tree Harvesting". Then use the drawing tools to define a woodlot boundary, then for planting define the current vegetation cover, and select species, tending options, and harvest age. For harvesting you will need to add access roads, and skid locations. Treefarmer will help you determine the woodlot area, establishment costs, and potential yields. At harvest it will estimate roading, harvesting and transport costs based on terrain and location information. This application is intended to improve woodlot owner knowledge of issues and options that arise at planting, and again at harvest. A checklist of issues is provided to print and help tick off completed items.

### PROJECT DETAILS

Project name

Description

Load existing project
Save project

Planting trees
Tree Harvesting

Inputs
Estimated Costs
Generate Report

Use below feature to add multiple scenarios, select the designated scenario from the dropdown menu before drawing:

Scenario 1

Add

Delete

### 1. Map Search

Use the map to navigate, or search for a property address.

### 2. Draw Access Road (start drawing from public road to woodlot)

Use Line Drawing Tool



Zoom Level: 14

Enter address or search

**Drawing Tool Active**  
(Hit Enter or double-click to finish)

Woodlot 1

Map Layers

- Productivity surfaces
- Wind risk
- Land Parcels (LINZ)
- Roads (LINZ)
- Waterways (NIWA)
- Power Lines (LINZ)
- Power Lines (OSM)
- Rock Pits (LINZ)
- Shingle Pits (LINZ)
- Quarries (LINZ)
- Slope layer
- Erosion layer
- Basemap: Aerials (LINZ)
- Basemap: Streets (OSM)

mapbox

Aerial imagery sourced from the LINZ Data Service, CC BY 4.0 | Map data by FGR, LINZ, NIWA | © Mapbox © OpenStreetMap Improve this map © Maxar

Planting trees **Tree Harvesting**

Inputs Estimated Costs Generator

Use below feature to add multiple scenarios, select the designated scenario from the before drawing:

Scenario 1 Add

1. Map Search

Culverden, Canterbury, Neuseeland

Use the map to navigate, or search for a property address.

2. Draw Access Road (start drawing from public road to woodlot)

Use Line Drawing Tool

3. Draw Woodlot Boundary

Use Area Drawing Tool

4. Draw Skid Location(s)

Use Marker Drawing Tool

5. Select Roading Type

- Trucking (up to 7° incline)
- Existing
- Trucking (up to 7° incline)
- Forwarder (up to 15° incline)**
- Forwarder (on existing track, up to 15° incline)

1 drawn Woodlot(s) Boundary - 25.01 ha

Calculate Costs Reset



# We're seeking foundation customers

ORBICA



WOOD INNOVATIVE DISRUPTION IN FOREST INDUSTRIES

Leonhard Ventures



SWISS KRONO

# Your contact



**Peter Rose**  
Managing Director  
[Peter.rose@orbica.com](mailto:Peter.rose@orbica.com)  
+49 176 8084 96 38

Learn more at:

[www.orbica.com](http://www.orbica.com)

ORBICA

