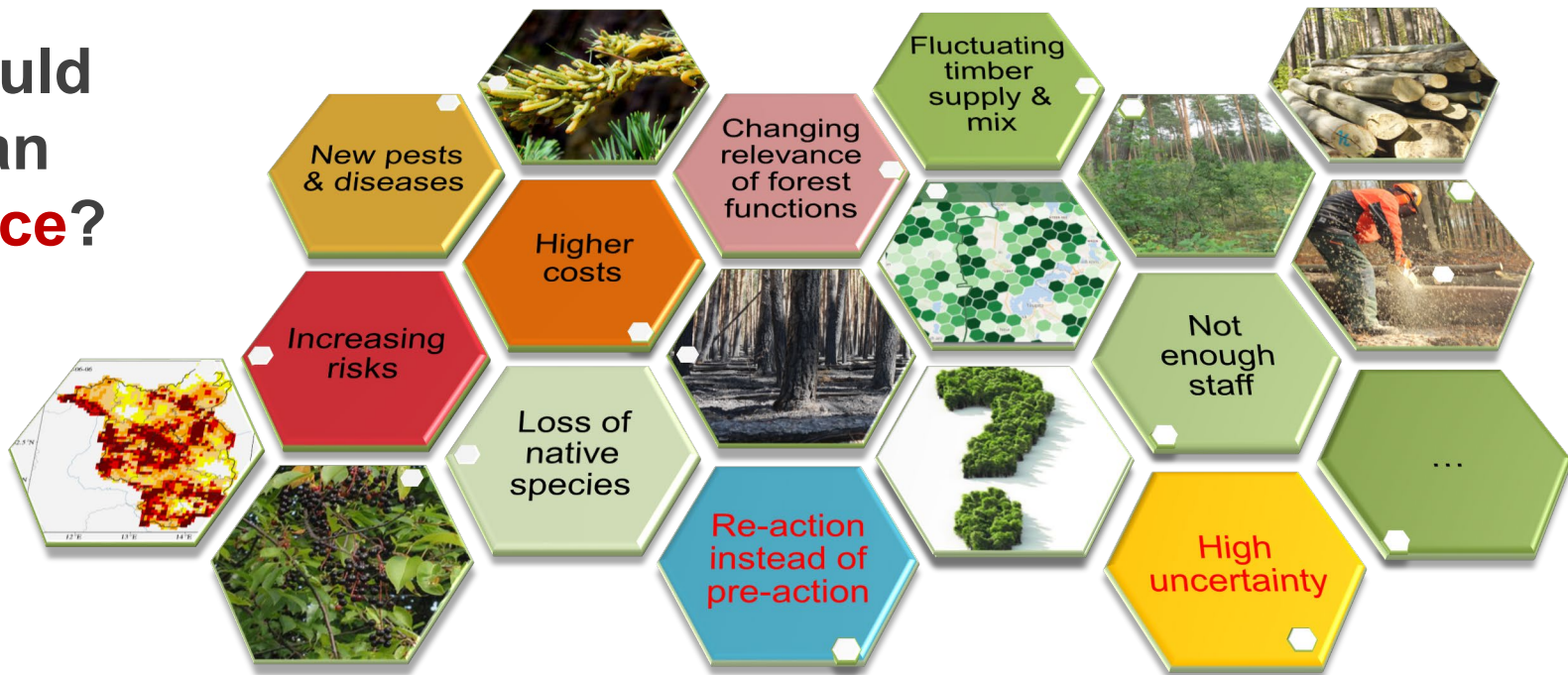
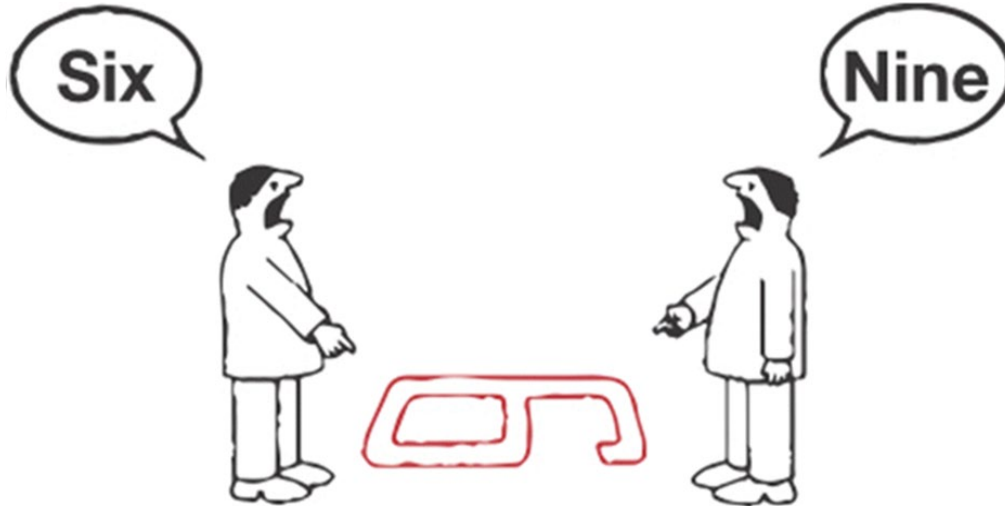


Selected challenges for the forestry and wood sector



What could that mean in practice?





Finding solutions
is **not about**
trying to be right,
but about
taking a **systems**
perspective

Modified from Weiner et al. 2020
<https://link.springer.com/article/10.1007/s11528-020-00529-w#Fig1>

All of us have to change our ways

...more **diversity** at all levels

...more **collaboration** between societal actors

...more **courage** to simply try things



Thank you for
your attention!

...
the
way
ahead for
forest research?

...stronger focus
on practical relevance

...adaptation of (long-term)
experimental sites to new challenges

...more transdisciplinary research with
stakeholders (participatory action research 2.0)