



The SWISS KRONO Show Module



A solid

timber module ...

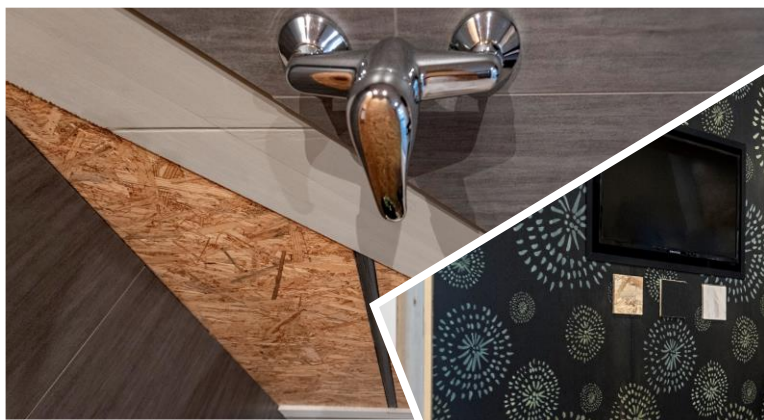


... in life size

and

on wheels





Bundled SWISS KRONO power
for your sustainable solutions in wood construction
and interior design.



Massive elements with MAGNUMBOARD® OSB

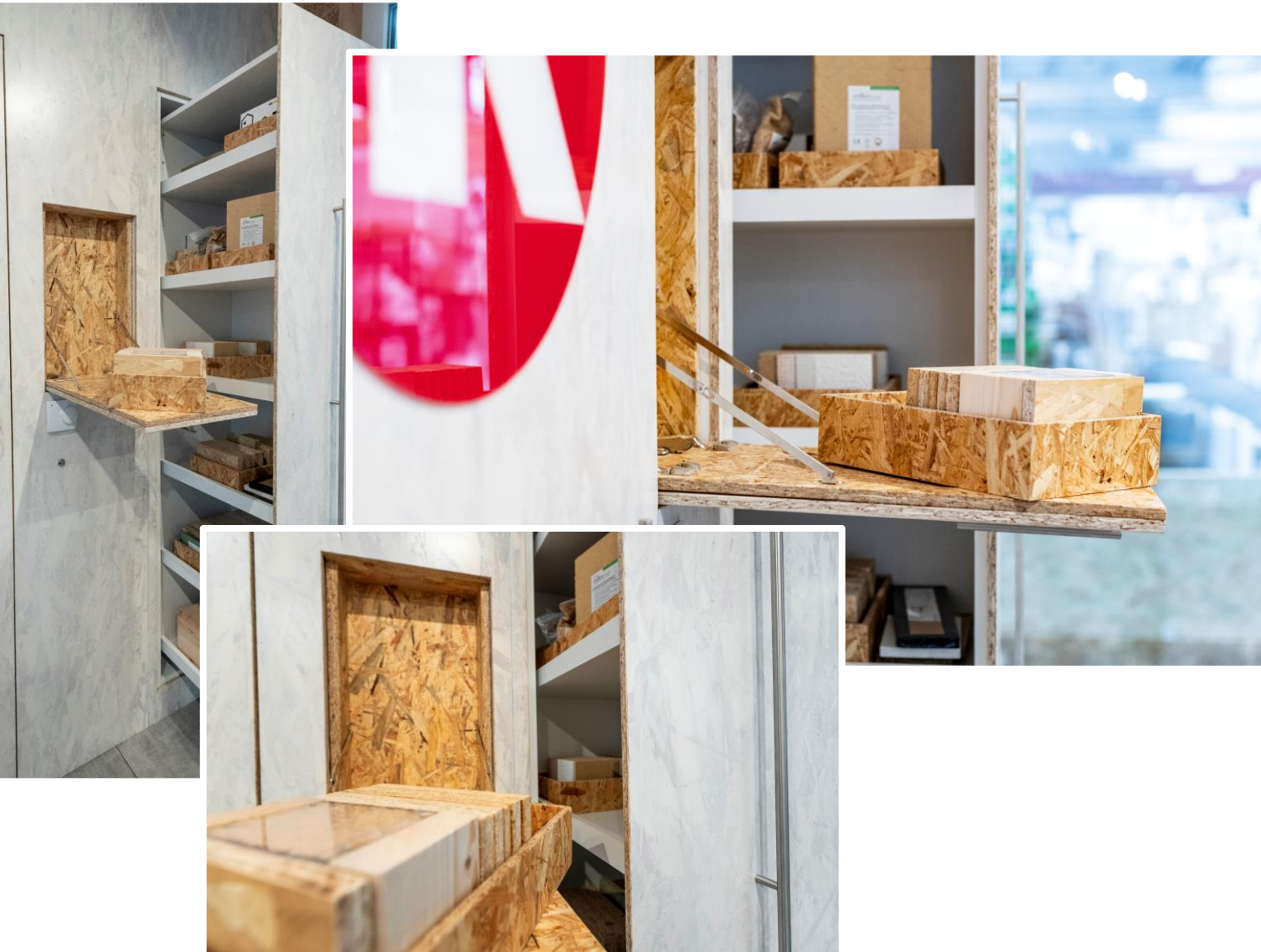


Extensive prefabrication:
Installation on or in walls,
everything is flexibly
plannable with
MAGNUMBOARD® OSB.

For example prefabricated
electrical conduits.



Massive elements with MAGNUMBOARD® OSB

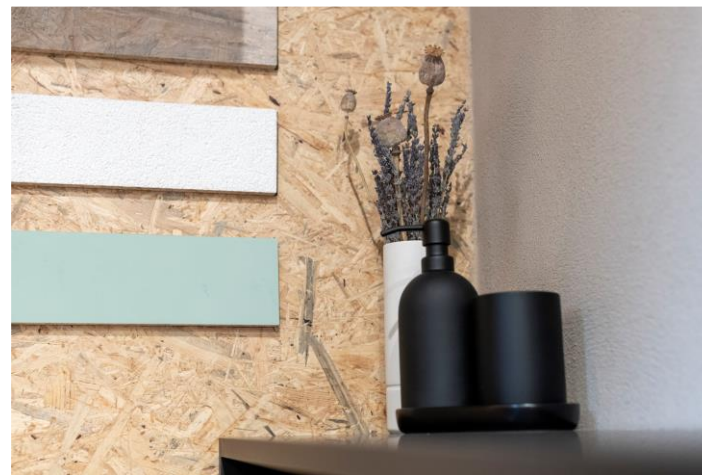


Tested and proven
constructions

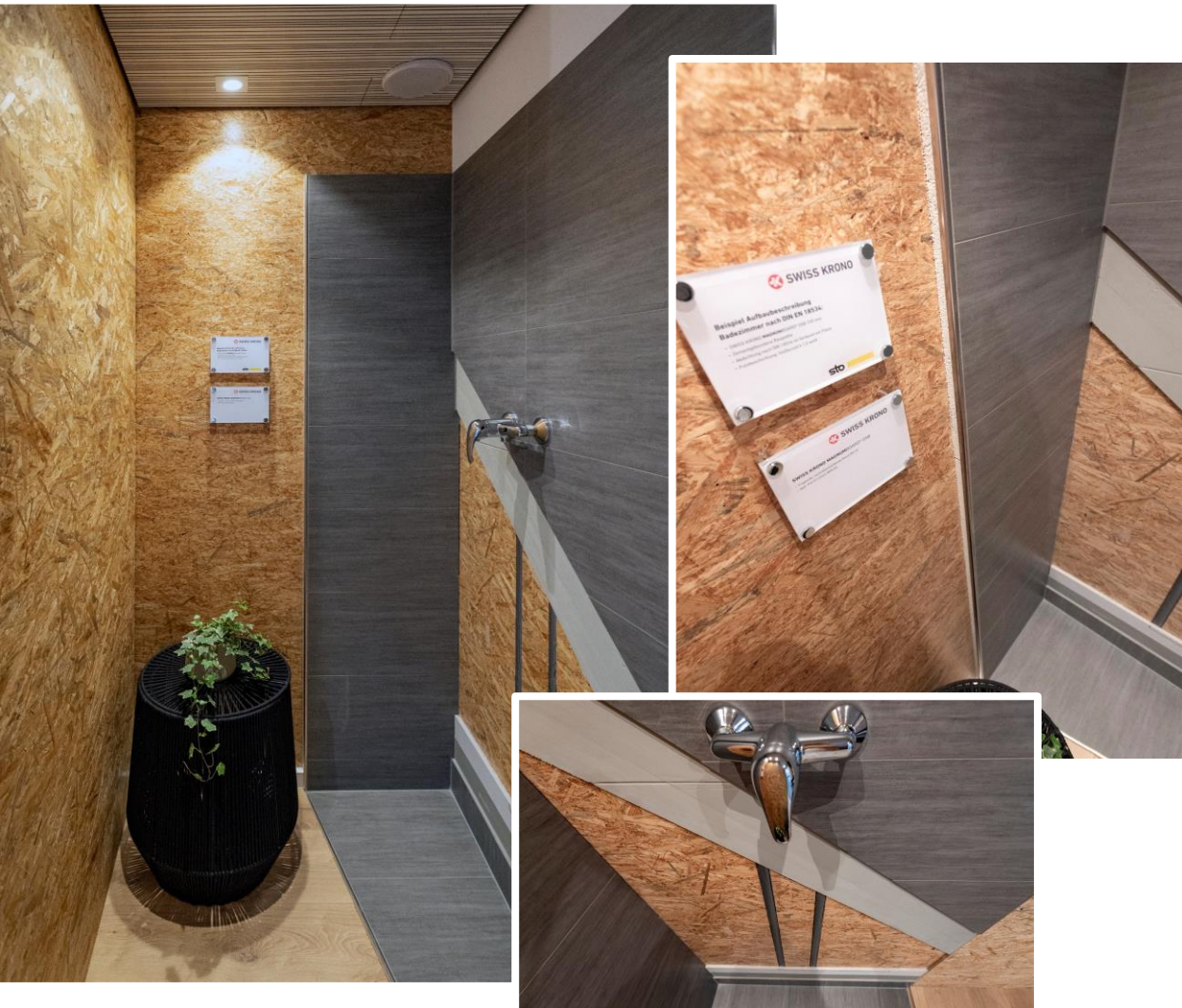
Massive elements with MAGNUMBOARD® OSB



Direct Interior
Finishing – Without
Plasterboard



Massive elements with MAGNUMBOARD® OSB



Plastering, papering,
tiling or painting

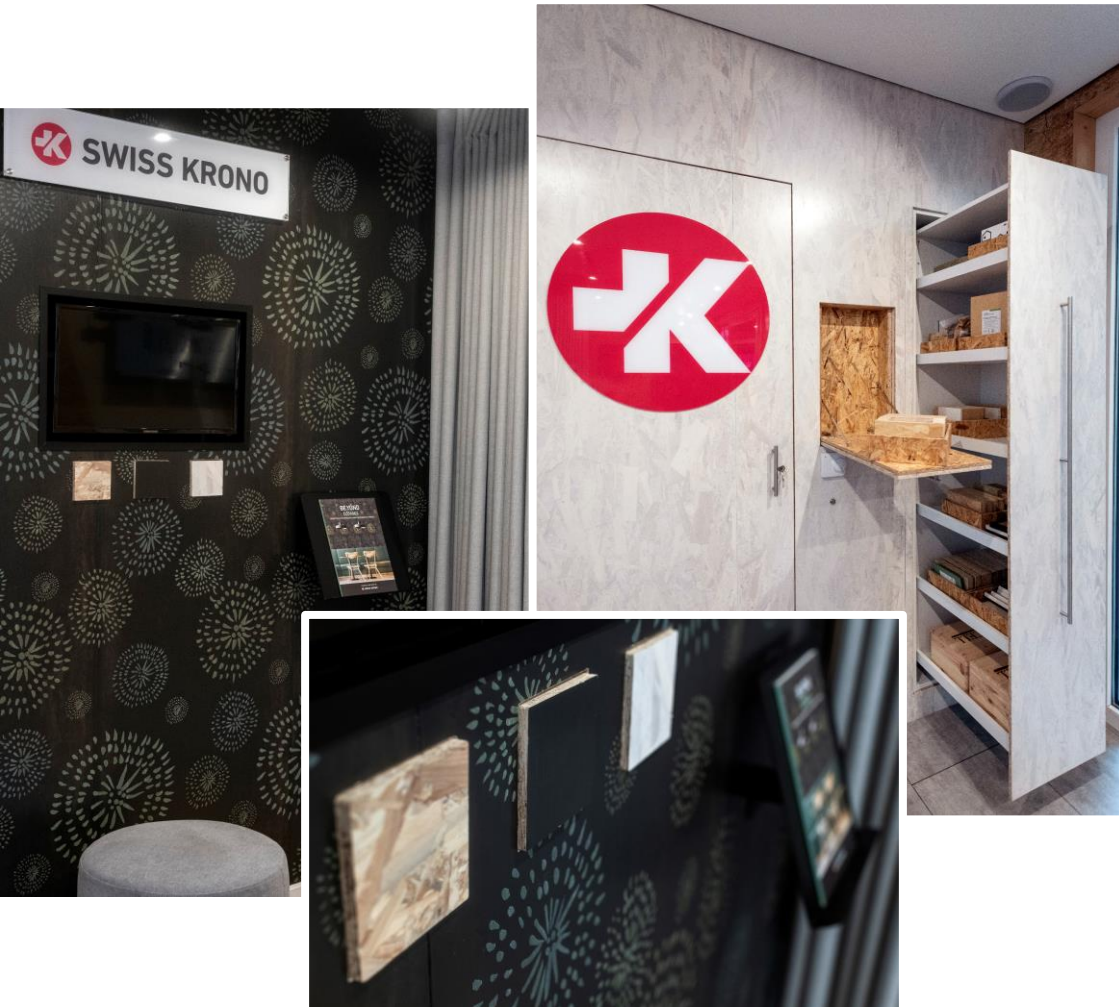
Special conditions require accurate fit OSB

Fire protection with the
flame retardant **OSB stop
fire**

Emission protection
through **OSB
sensitive** with very
low VOC values



Special conditions require accurate fit OSB



Shopfitting and exhibition stand construction are uniquely decorative with **BE.YOND ecoWALL**

Soundproofing



sound absorbing acoustic
ceiling **SWSSCLIC PANEL-**
A+



Ecological flooring



ROOMS - a floor that adapts to individual wishes



<https://rooms-floor.com>



COREPEL - the durable eco design floor



<https://www.corepel.com>

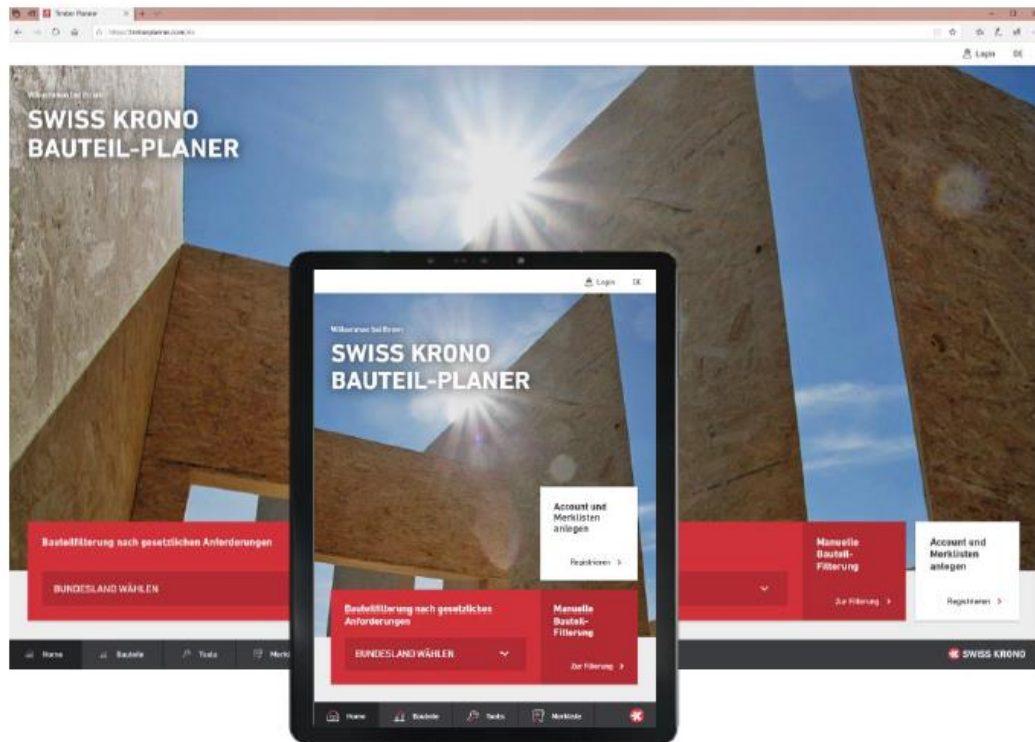
Simple preparation of projects



Made planning
easy with the
Timberplanner



www.timberplanner.com/de



Transport of the SWISS KRONO Show Module for your event



- Towed by a lorry + with a special permit for oversize transports up to three metres wide
- Exteriors are protected by silver-coloured tarpaulins
- Dimensions (incl. removable frame):
L 9,98 m x B 2,98 m x H 3,05 m

We would be happy to support you at your next event and provide you with the show module. Please contact us:



Stefan Gottfried

stefan.gottfried@swisskrono.com

+49 172 909 6586

+49 33962 69 751



*Wood is our
passion*

SWISS KRONO TEX GmbH & Co. KG

Wittstocker Chaussee 1
16909 Heiligengrabe, Germany

www.swisskrono.com/de-com

