

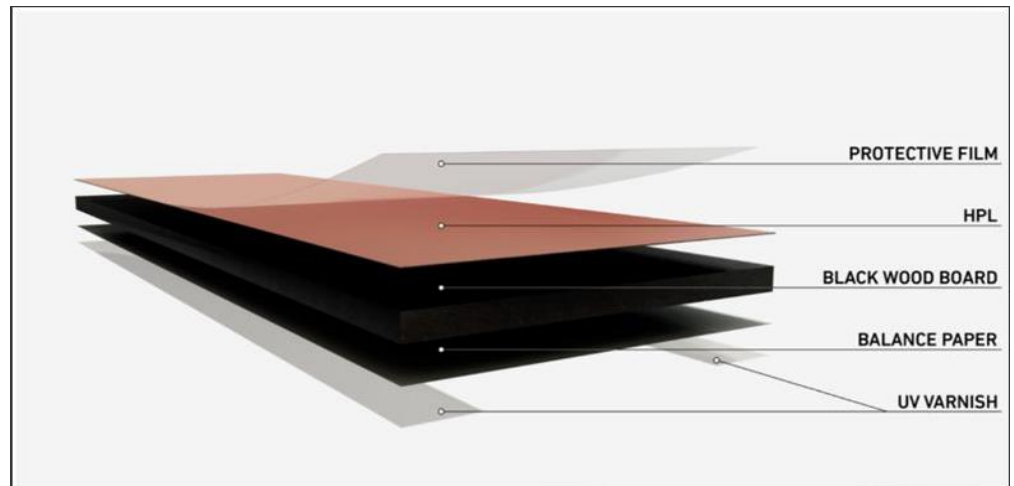
# Ultra-thin worktops SWISS KRONO BLACK WOOD

## Technical characteristics

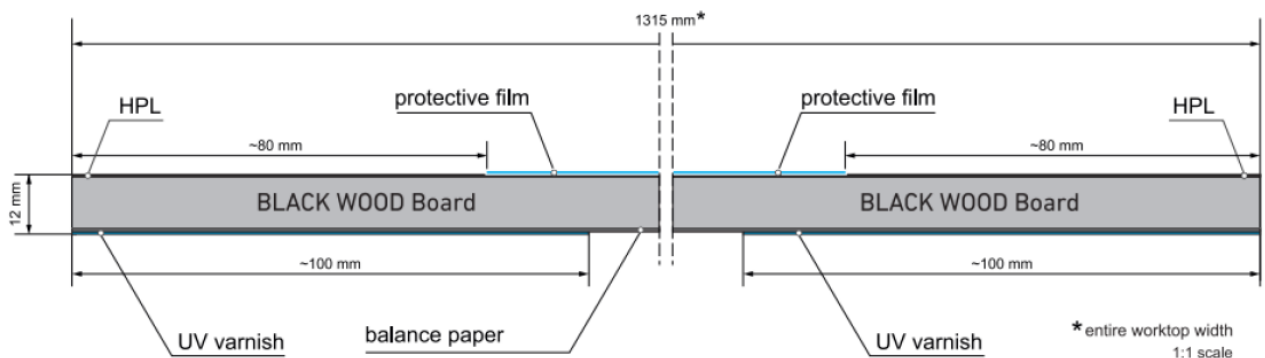
### Characteristics

Ultra-thin worktops SWISS KRONO BLACK WOOD – its wood-based composite material covered with HPL from one side.

### Structure of worktop



Ultra-thin worktops BLACK WOOD made of high density black-coloured HDF of the thickness of 11.6mm. The worktop surface is covered with HPL (with protective film). The bottom surface is covered with balance paper which constitute counterbalance to the tension caused by HPL. On both sides about 10cm from the edge UV varnish is put on the worktop underside on both sides to protect against moisture and steam.



### Application

Ultra-thin worktops are used for furniture and interior-finishing elements such as kitchen worktops, furniture tops, counters, tables, desks, shelves, furniture (e.g. containers, trolleys), backsplash boards. Worktops are resistant to surface loads and are ideal for use in areas with high humidity: bathrooms, kitchens, laundries, swimming pools and spas, garages and basements.

### Advantages

- ✓ the product is moisture resistant (low swelling) - can be used in rooms with enhanced humidity
- ✓ is flame retardant (D-s1,d0) - is ideal for interior furnishings and public buildings
- ✓ the surface is resistant to elevated temperatures - a pot with boiling water can be placed directly on the worktop (kettles are an exception) without causing damage - hot metal pots and pans with single and multilayer bottoms, too - but we recommend that insulation pads be used
- ✓ the surface is abrasion, scratch and impact resistant - it will shrug-off most domestic activity, but we recommend using a cutting board for cutting, sanding and hammering
- ✓ it has a stain-resistant surface that is easy to clean
- ✓ the surface will not fade in strong light

- ✓ it's safe for health (hygiene class E1/ED2020)
- ✓ the surface has antibacterial properties
- ✓ the item is a wood-based product - natural and ecological
- ✓ edge banding is not necessary, but possible
- ✓ it can be manufactured in any desired shape
- ✓ its dark, distinctive BLACK WOOD edge gives the worktop an unusual, original look
- ✓ any profile can be given to the edges
- ✓ it's ultra-thin - lends any room a unique sense of lightness and elegance
- ✓ the product has a subtle classy look thanks to the use of ultra-thin, high-quality BLACK WOOD board

### IMPORTANT NOTES!

All visible (external) worktop edges necessarily have to be protected in order to close their surface and protect them against dirt, abrasion and water penetration, as well as for aesthetic reasons (use of wax deepens the black colour of the base board). For this purpose, we recommend:

- ✓ use of colourless coatings like: hard wax, varnish. Warning: We particularly recommend use of OSMO hard wax,
- ✓ edgeband, e.g. ABS one, glued with the use of polyurethane glue.

### IMPORTANT

ONLY top-mount sinks can be installed (NOT under-mount sinks). The BLACK WOOD worktop should not be used for suspended sinks.

All important information and recommendations for installation and use are contained in "SWISS KRONO BLACKWOOD Worktop Processing, Installation and Use Manual".



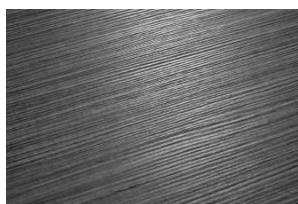
All SWISS KRONO Worktops have antibacterial properties.

Such properties BLACK WOOD Worktops mean that bacteria do not grow on their surfaces. Antibacterial activity tests have been performed in accordance with ISO 22196:2011 against two bacteria (Staphylococcus aureus and Escherichia coli), and their results confirm that the worktop surface inhibits the growth of microorganisms.

### Surface structure



**KM – Stone**



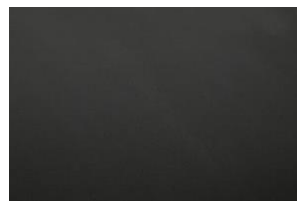
**MX – Matrix**



**OW – One Wood**



**SM – Silk-Matt**



**VL - Velour**

### Technical characteristics

Properties	Unit	Requirement	Test method
Scratch resistance	N	≥ 3*	EN 438-2
Abrasion resistance	rotations	Class 3A (IP ≥ 150, IP+FP/2 ≥ 350)	EN 438-2
Impact strength	N	≥ 20	EN 438-2
Resistance to hot serving/ cooking - ware (180°C)	Degree (min)	SQ surface: 3*; other surfaces: 4*	EN 438-2
Stain resistance	Degree (min)	4*	EN 438-2
Fire classification	-	D-s1,d0 (flame retardant)	EN 13501-1
Edge swelling after 24h**	%	≤ 8	EN 317
Formaldehyde emission	-	E1 Class / ED2020	EN 717-1
Base board density***	kg/m <sup>3</sup>	900	EN 323
Weight of 1 piece***	kg	60	-

\*The result of the surface change inspection should be determined according to the following grading scale:

Grade 5: no visible change

Grade 4: slight change in gloss and/or colour, visible only from a certain angle

Grade 3: moderate change in gloss and/or colour

Grade 2: significant change in gloss and/or colour

Grade 1: Blistering and/or delamination

\*\* unsecured edge – tolerance +/- 10% (after securing of the edge, e.g. with hard wax, swelling is about 1,5%)

\*\*\* tolerance: +/- 5%

### Dimensions of ultra-thin worktops SWISS KRONO BLACK WOOD

Dimensions, mm		Dimension tolerance, mm
Thickness	12	+/- 0,3
Length	4100	+/- 5,0
Width	1315	+/- 0,5

### Certificates

- ✓ Hygienic certificate - confirming class E1
- ✓ ED2020 certificate
- ✓ Certificate of Health Quality of the National Institute of Public Health
- ✓ Fire classification - class D-s1, d0 class (flame retardant product)
- ✓ Certification confirming antibacterial properties
- ✓ Test report confirming low swelling

### Packaging

Packaging materials:

- ✓ lower spacers of chipboards with a height of 72mm and length of 1320mm,
- ✓ lower casing board with a size not less than 4110 x 1320 x 7 mm,
- ✓ casing cardboard,
- ✓ upper spacer with thickness of 7mm or more,
- ✓ cardboard corners ,
- ✓ polyester tape,
- ✓ info label.

### Storage and transport

- ✓ worktops should be stored and transported in a horizontal position, in dry conditions, on a dry and flat surface in a way preventing them from getting wet, warping or mechanically damaged
- ✓ the worktops should be stored in a dry and closed room, in stable temperature conditions above 5°C, relative air humidity from 45% to 65%, min., 1.5 m away from a direct source of heat
- ✓ while loaded and unloaded, the worktops should be lifted. They should not be shoved about and their edges should not be pulled
- ✓ the protective film should be removed only after completion of worktop installation

✓ any foreign bodies or pollutants causing friction found in the stack of worktops, may cause dents and surface damage

**IMPORTANT**

Improper storage may lead to permanent deformation of the worktops.

**Logistic**

Dimension, mm	Number of pieces per pallet, pcs	Weight of 1 piece, kg	Weight of 1 pallet (gross), kg*	Number of pallets per truck, pcs
<b>4100*1315*12</b>	10	60	660	35

\* weight tolerance +/- 5%

**Processing, installation, edge protection and maintenance rules**

Processing, cutting, edge protection and maintenance of BLACK WOOD worktops are described in the "SWISS KRONO BLACKWOOD Worktop Processing, Installation and Use Manual".